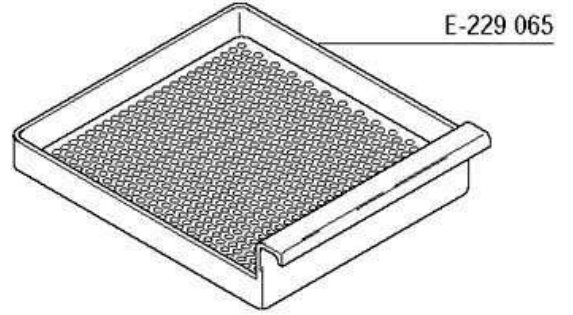
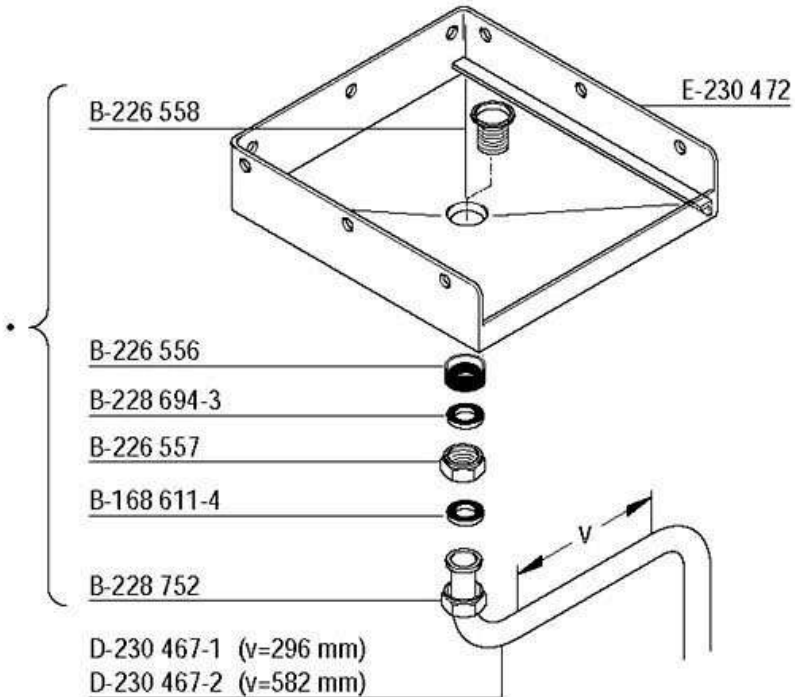
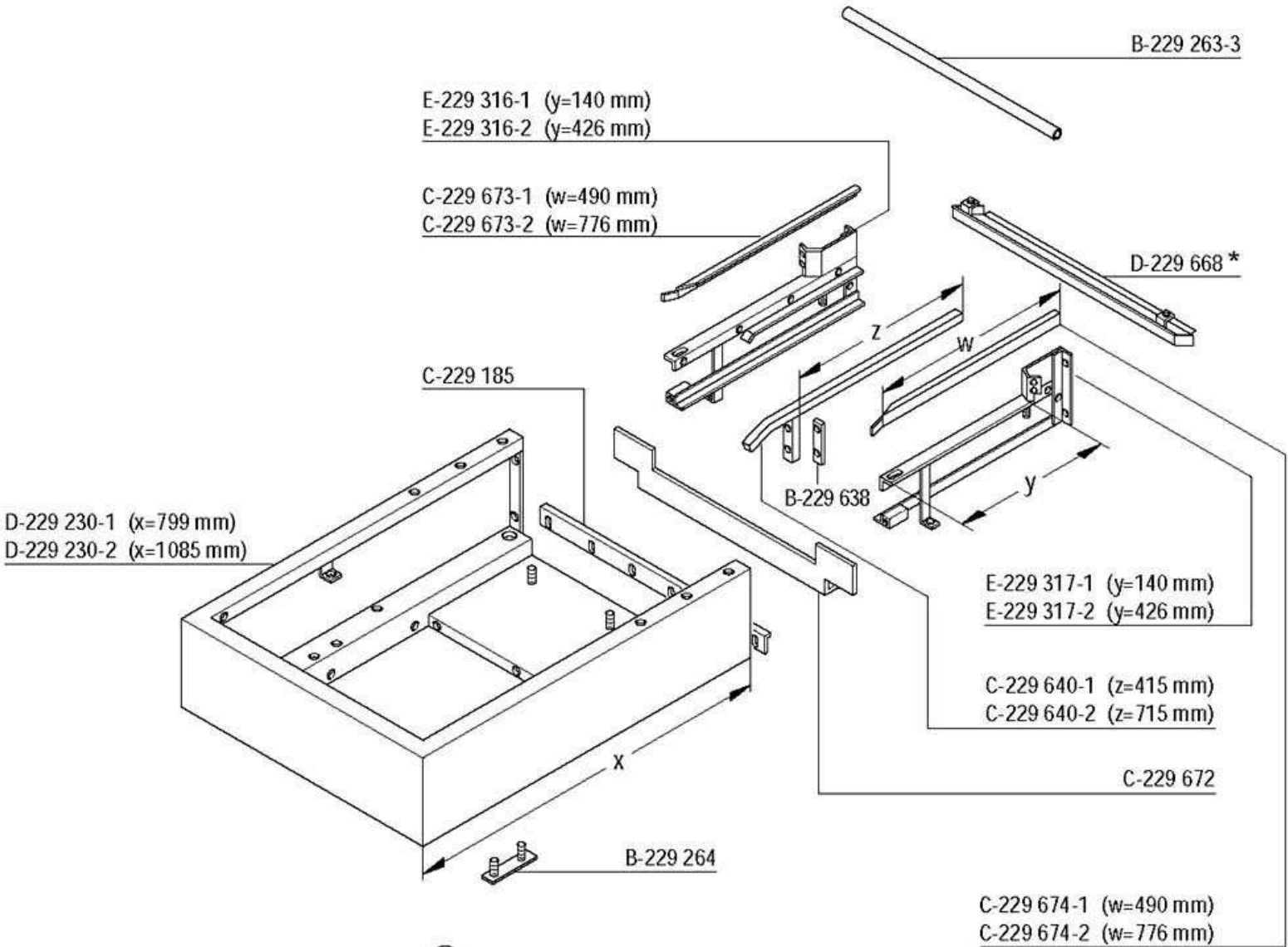


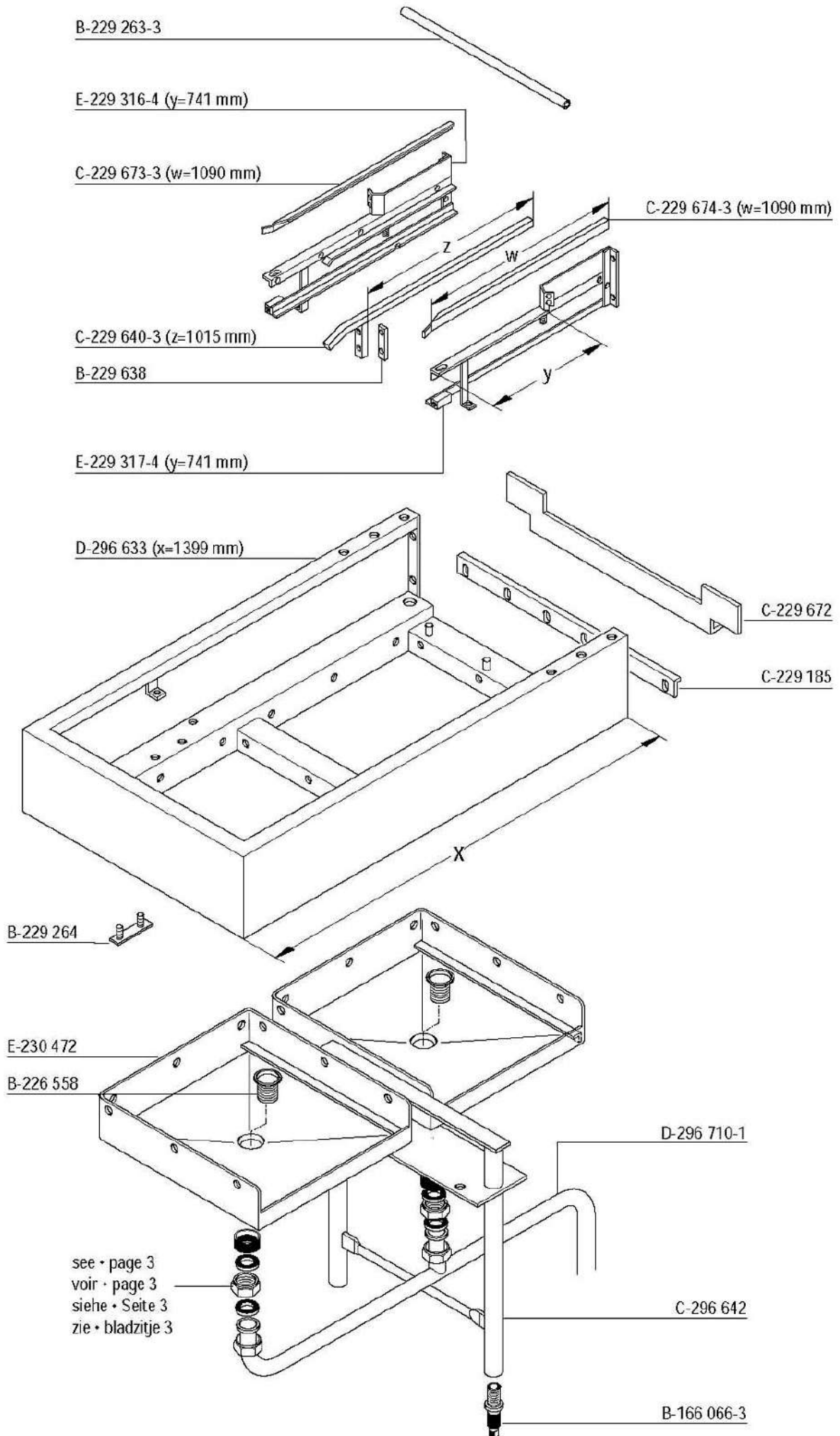
# **HOBART**

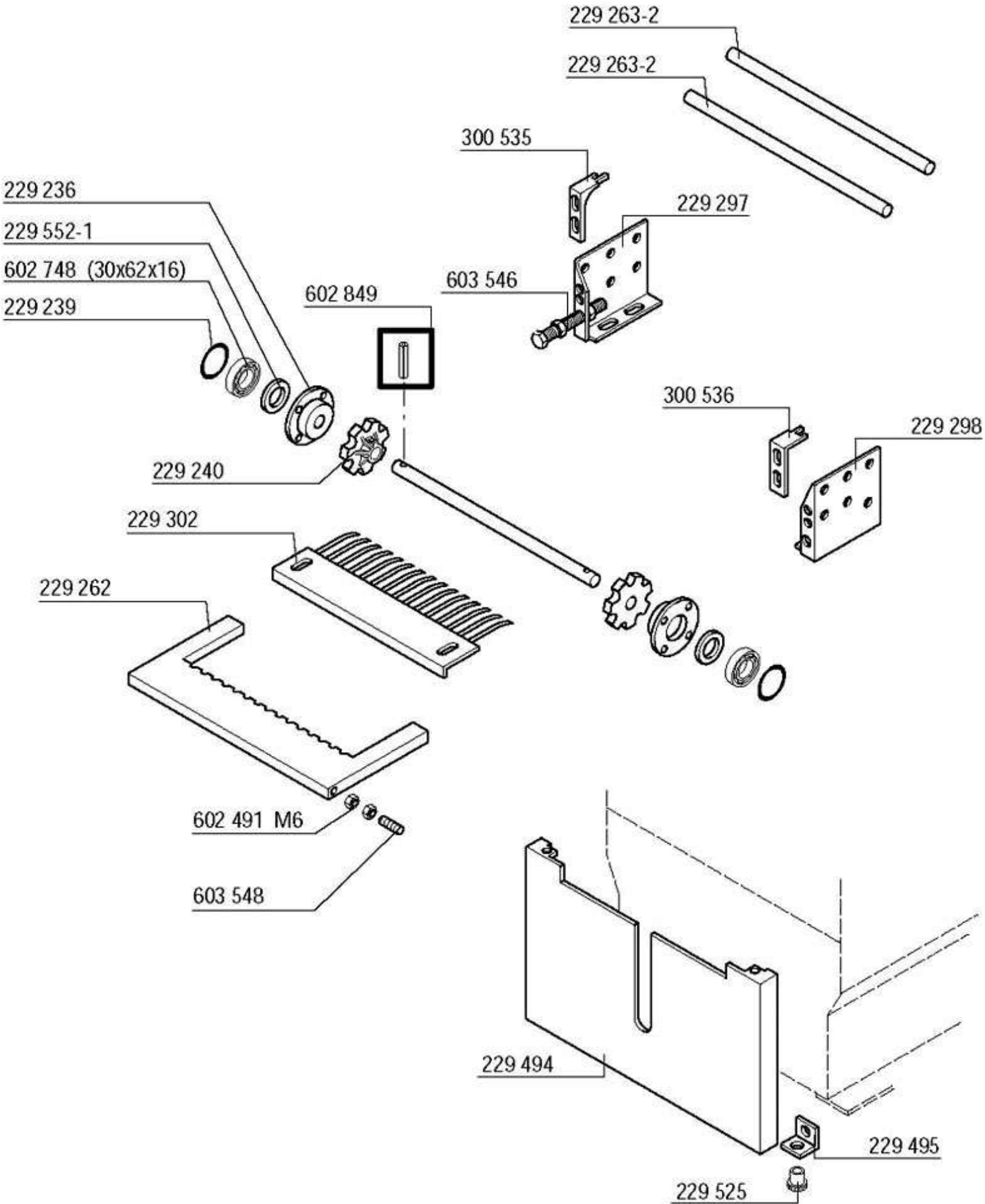


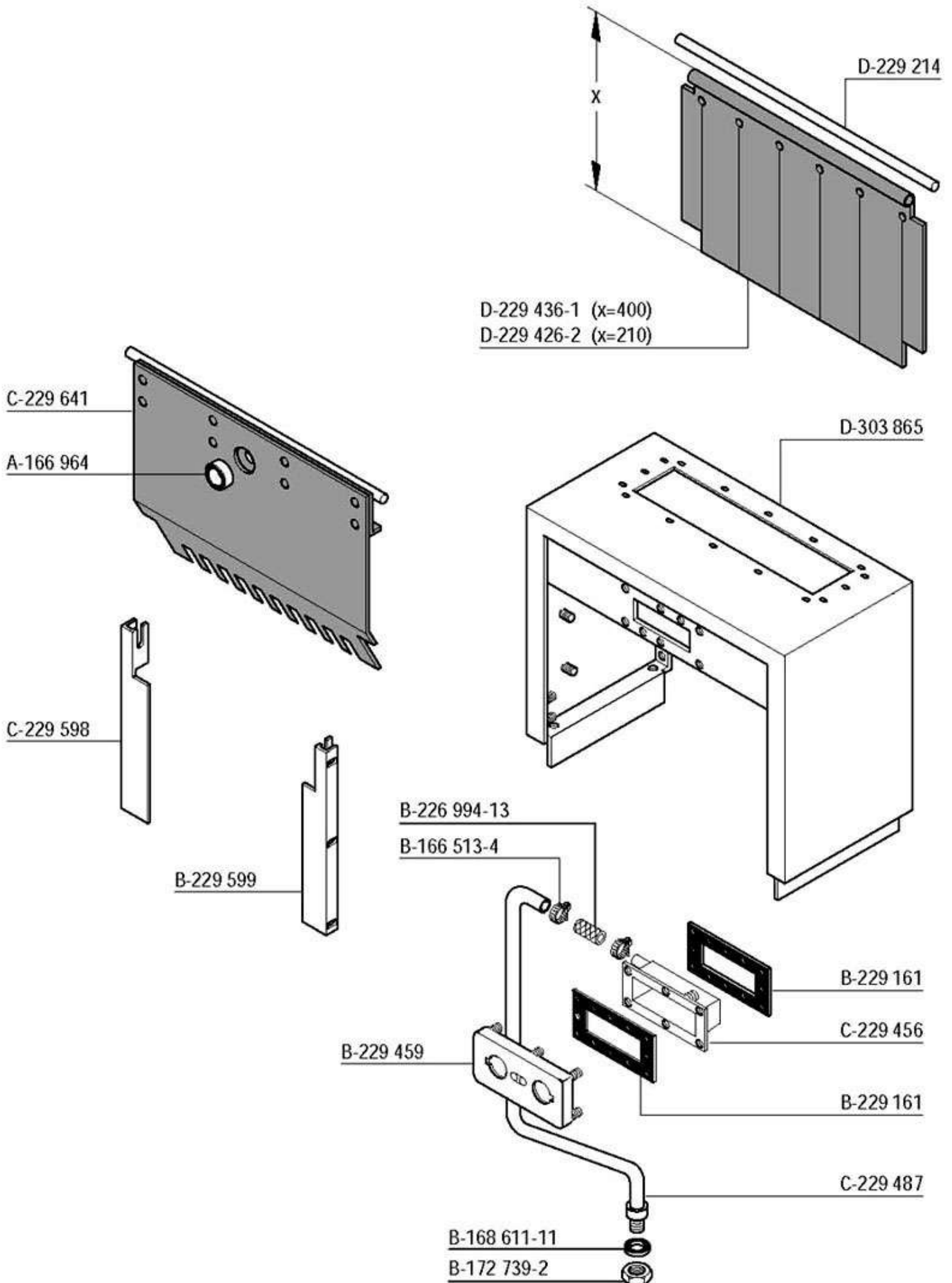
# **FUX**

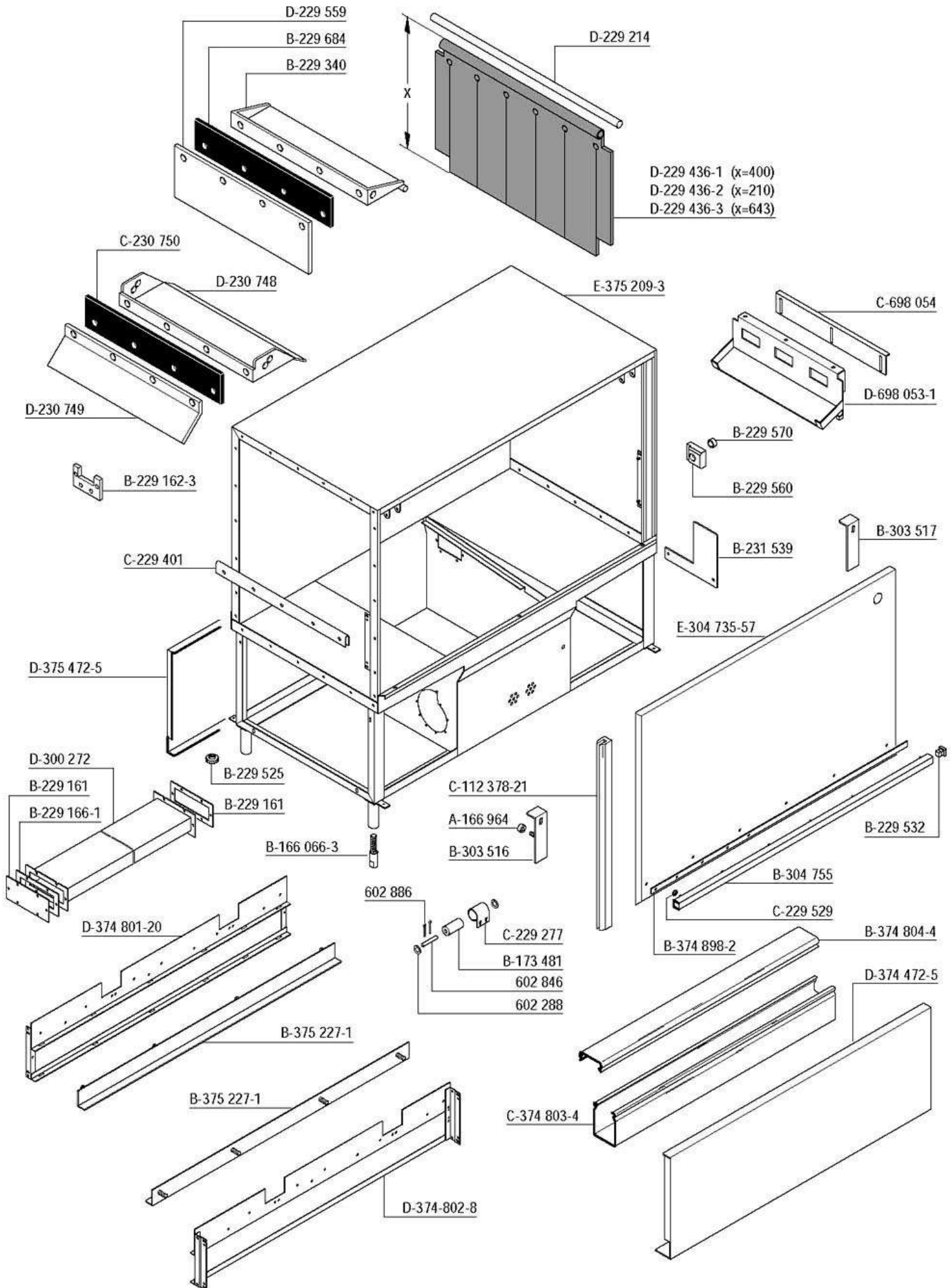


\* optimal: verlängertes Wasserleitblech D-375 702-3





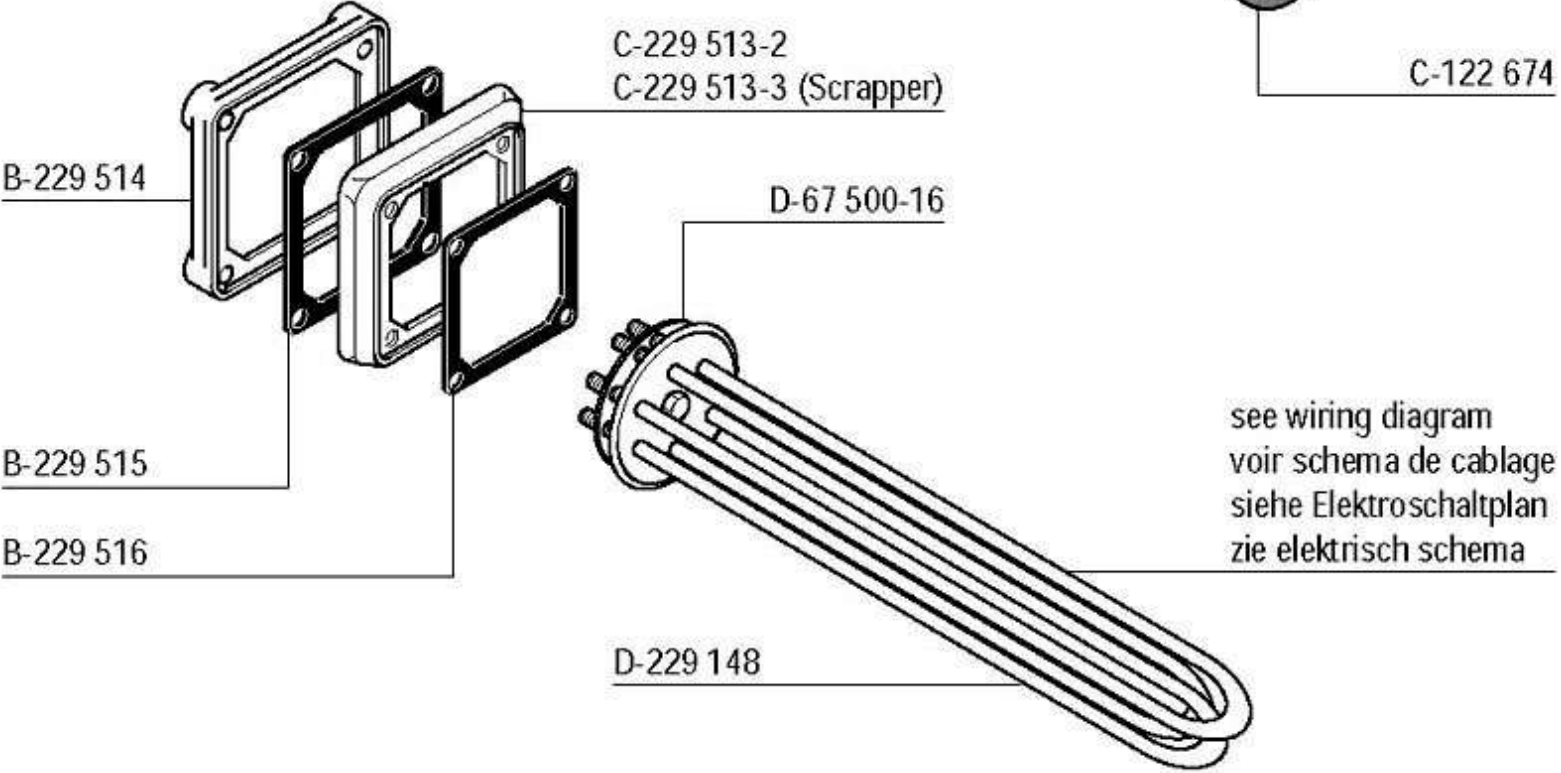
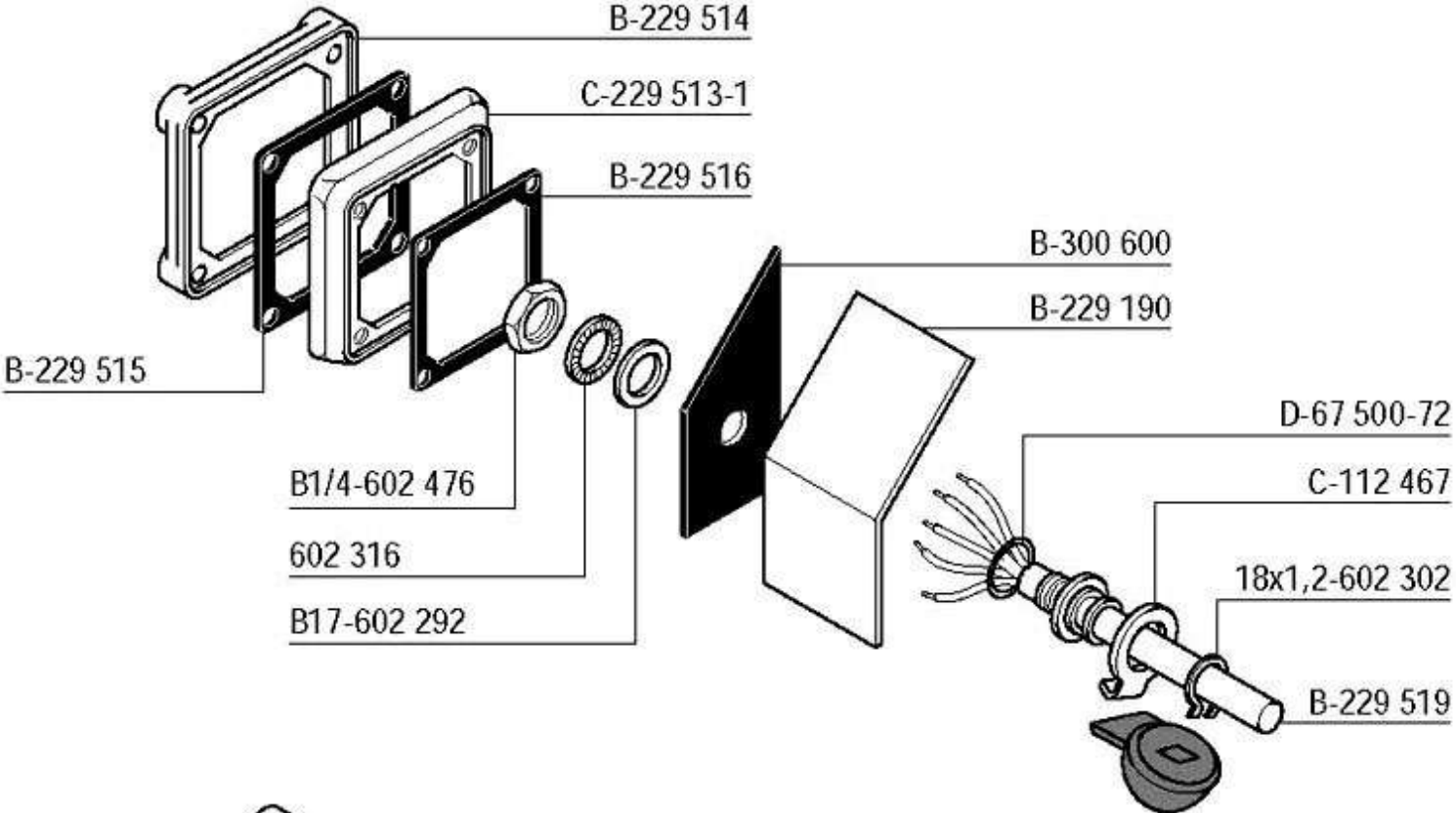






Tank heating + float switch  
 Chauffage de bac + interrupteur à flotteur  
 Tankheizung + Schwimmerschalter  
 Tankverwarming + zwem-schakelaar

FUX

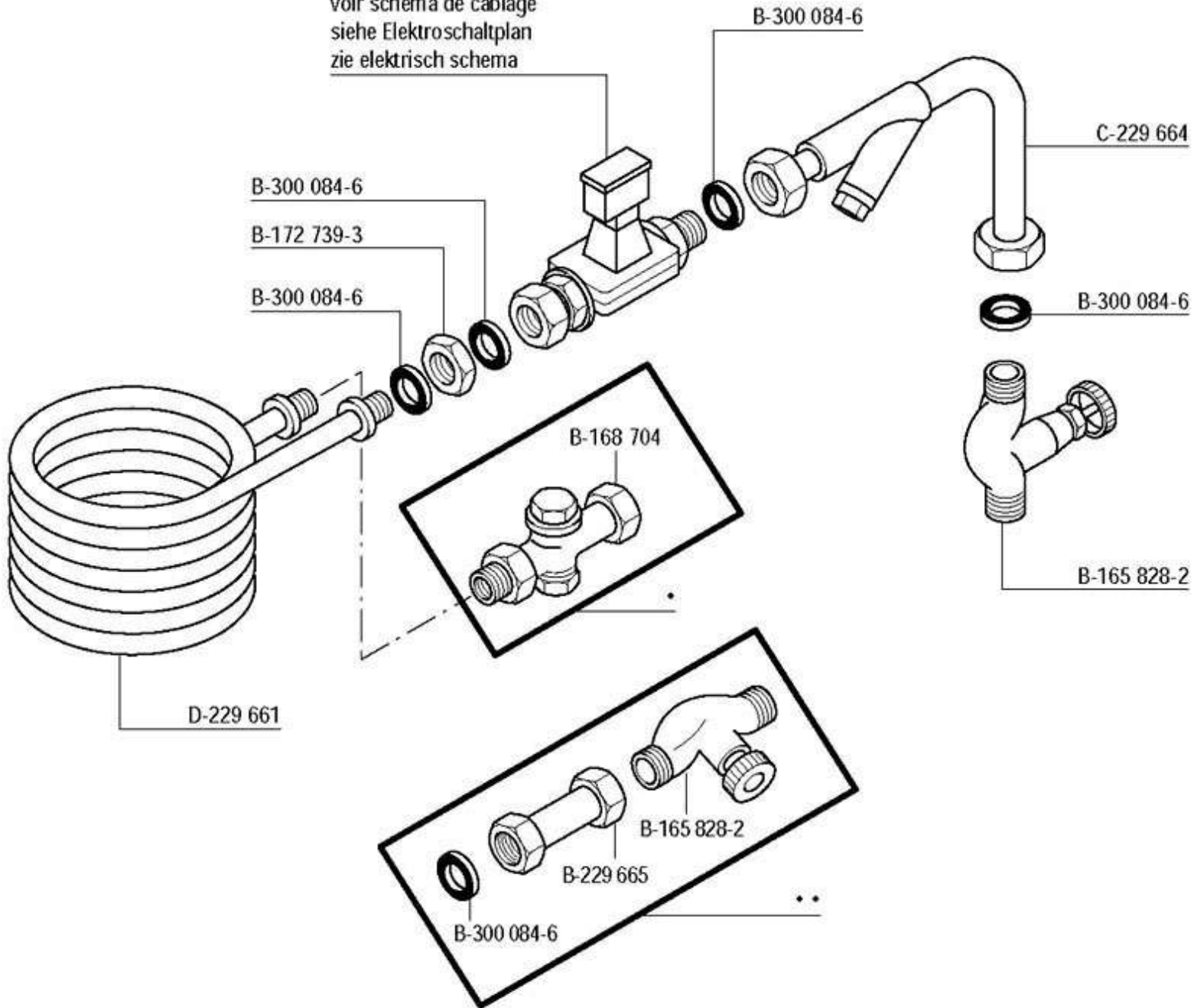




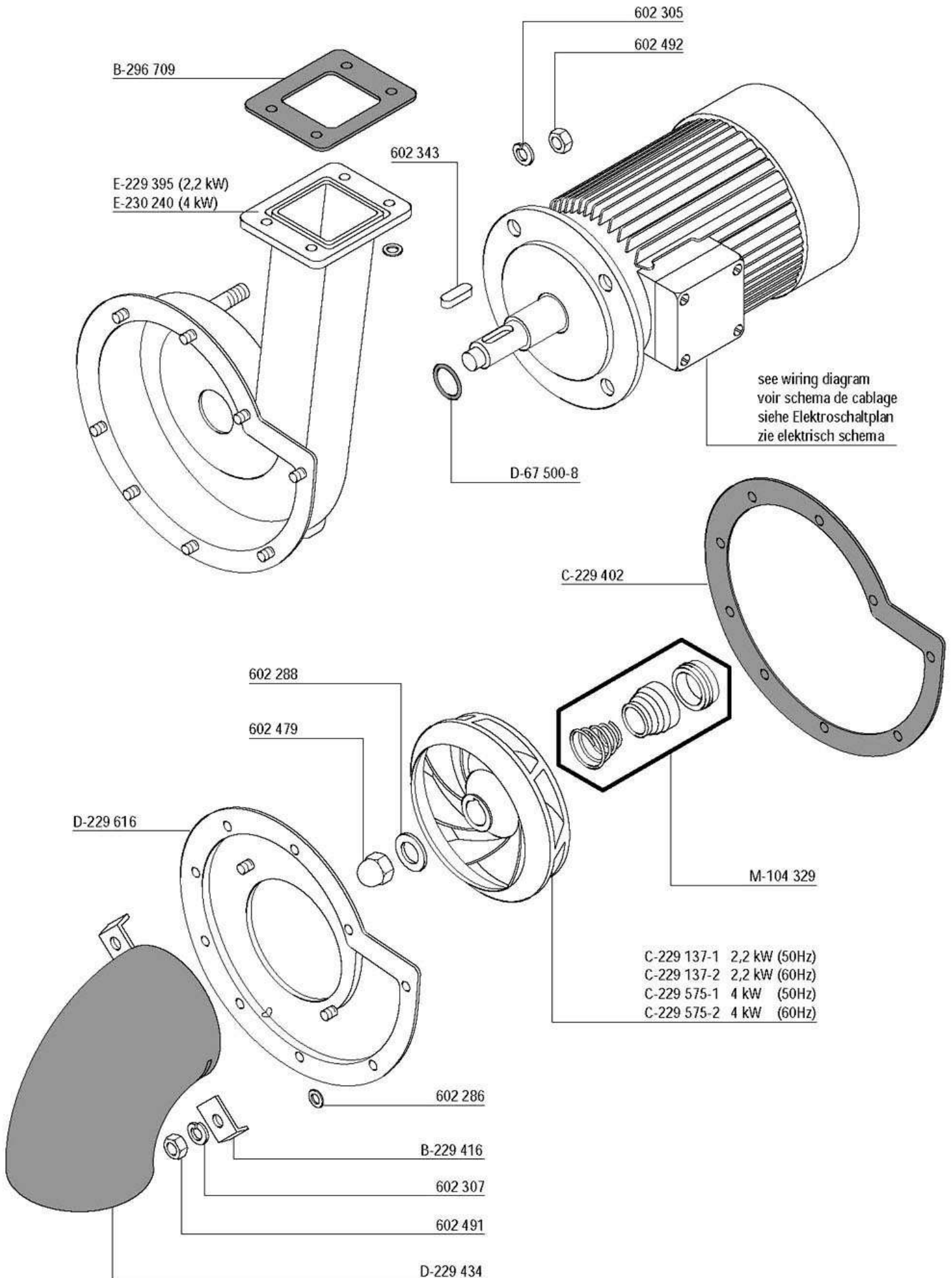
Tankheating - hot water + steam  
Chauffage de bac - eau chaude + vapeur  
Tankheizung - Heißwasser + Dampf  
Tankverwarming - heet water + stoom

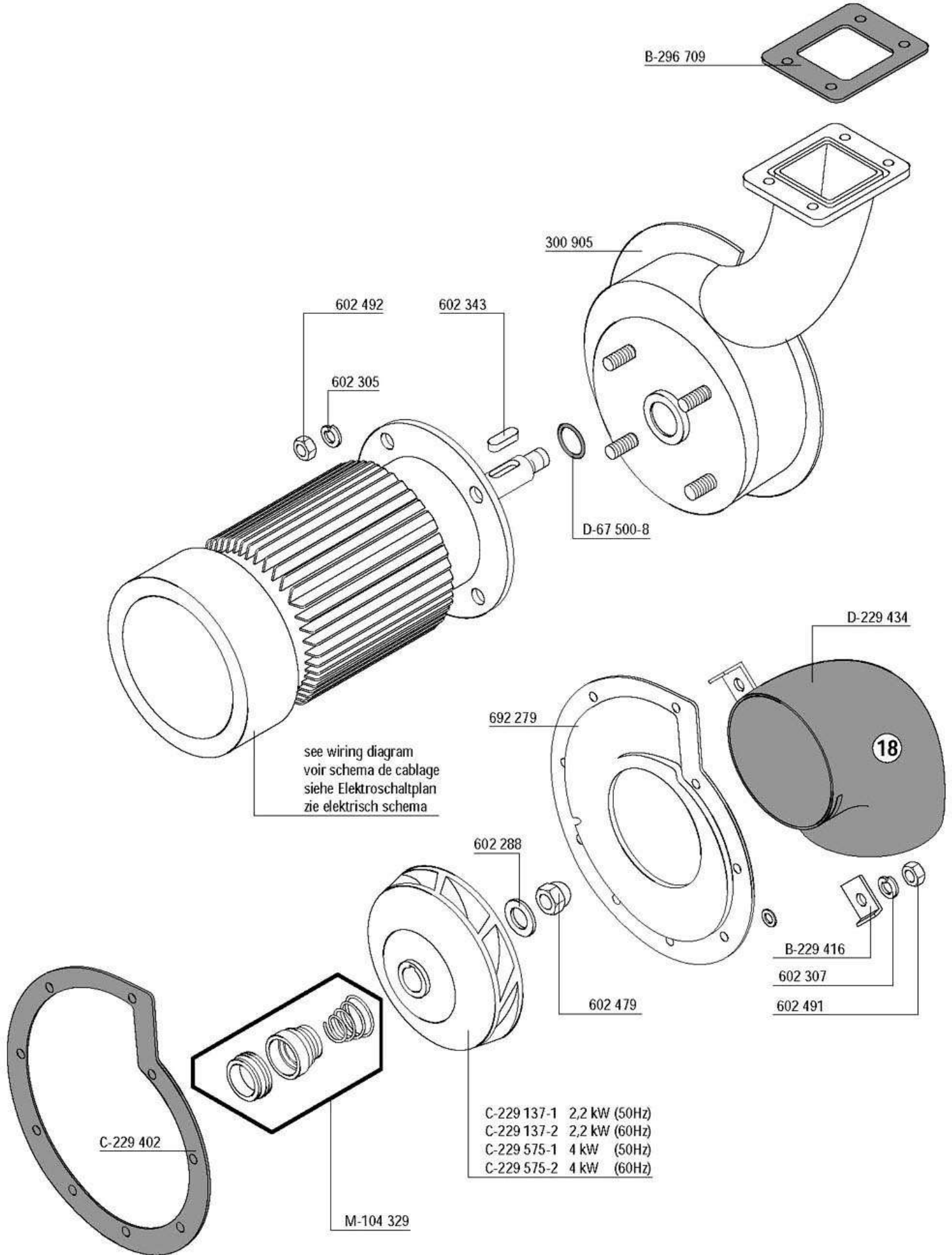
FUX

see wiring diagram  
voir schema de cablage  
siehe Elektroschaltplan  
zie elektrisch schema



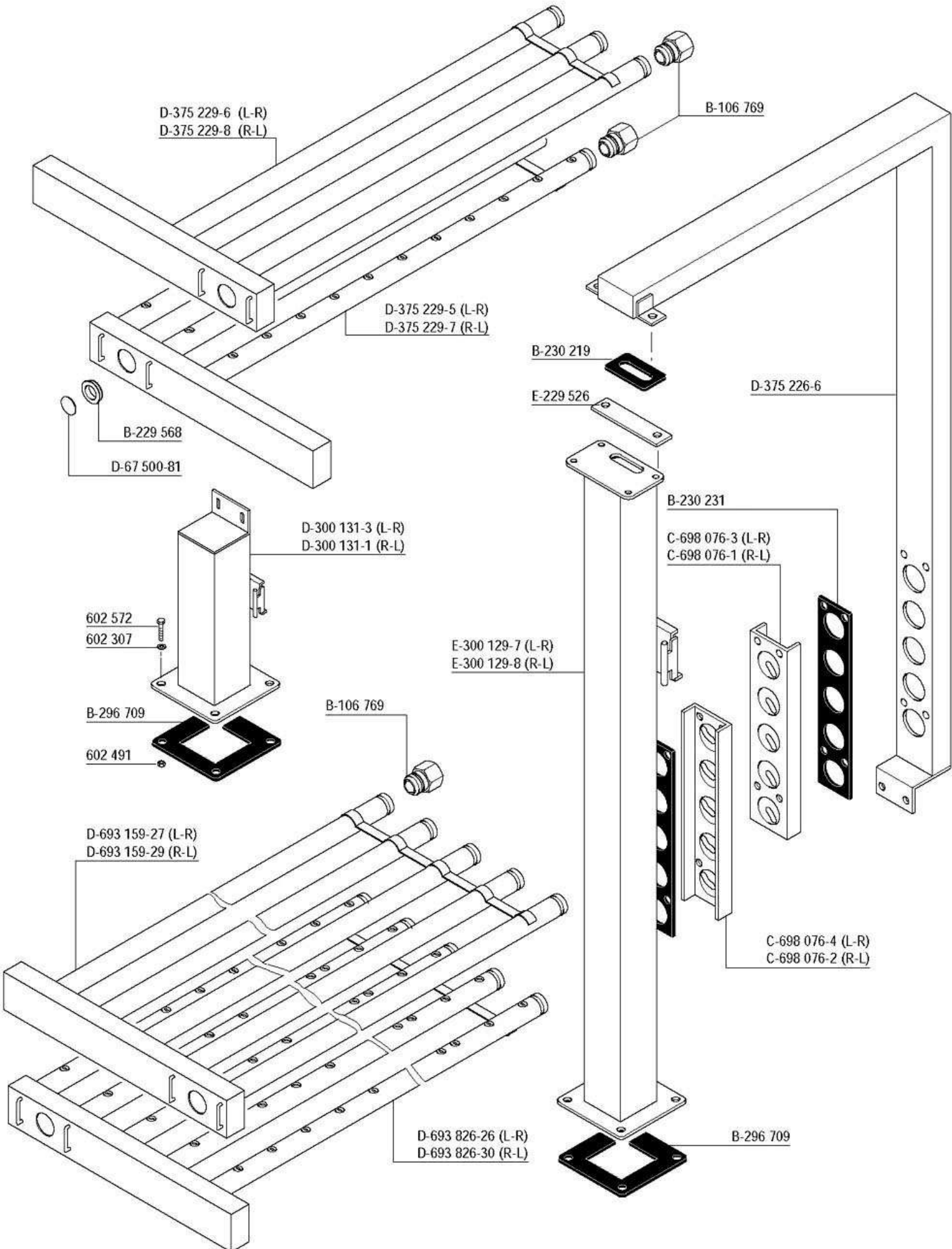






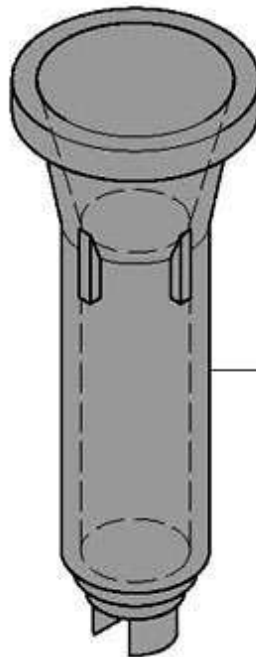
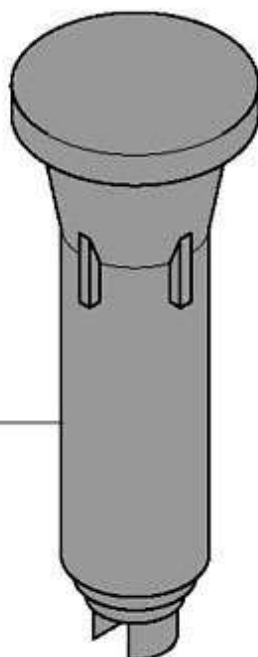
see wiring diagram  
voir schema de cablage  
siehe Elektroschaltplan  
zie elektrisch schema

C-229 137-1	2,2 kW (50Hz)
C-229 137-2	2,2 kW (60Hz)
C-229 575-1	4 kW (50Hz)
C-229 575-2	4 kW (60Hz)



A-B-C

S



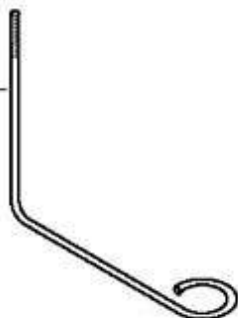
B-375 215-1



D-229 427-1

D-230 346-1

B-375 210-1



D-67 500-15

B-226 558-1



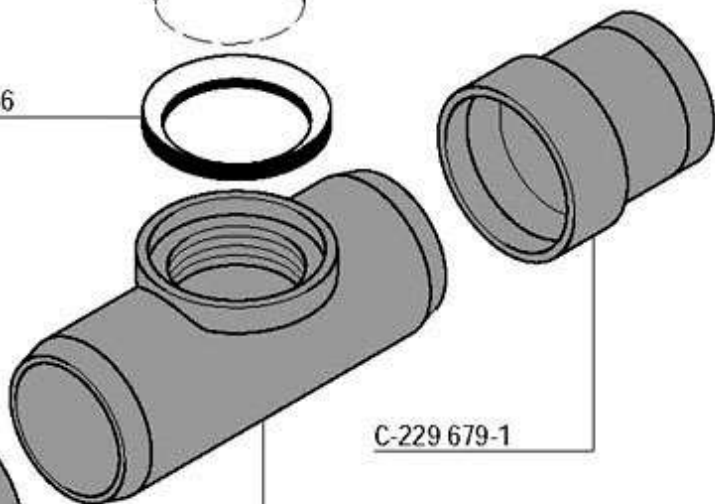
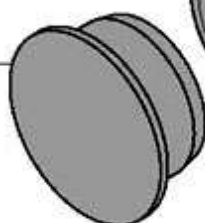
B-226 556



B-229 680-1

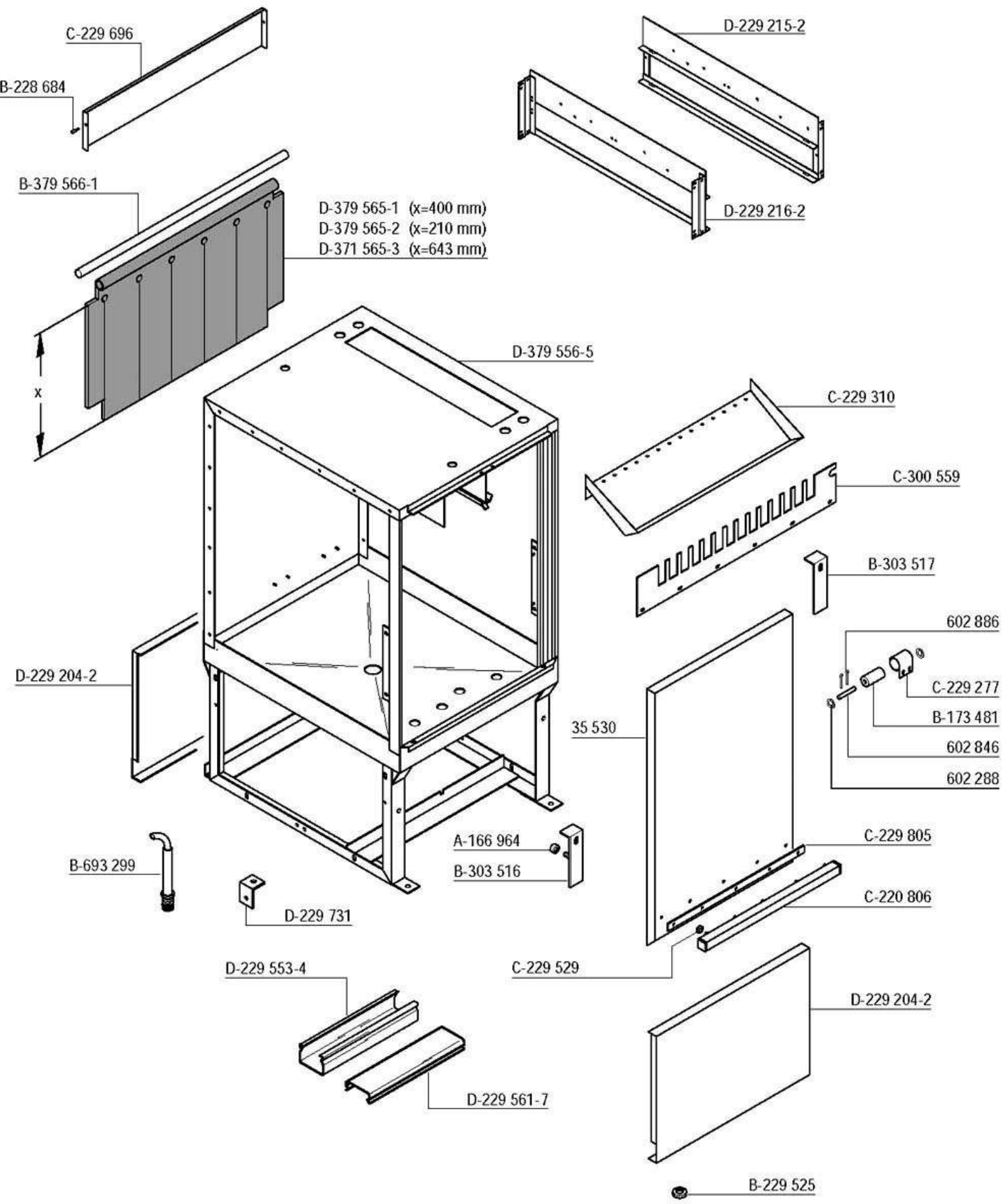
C-229 679-1

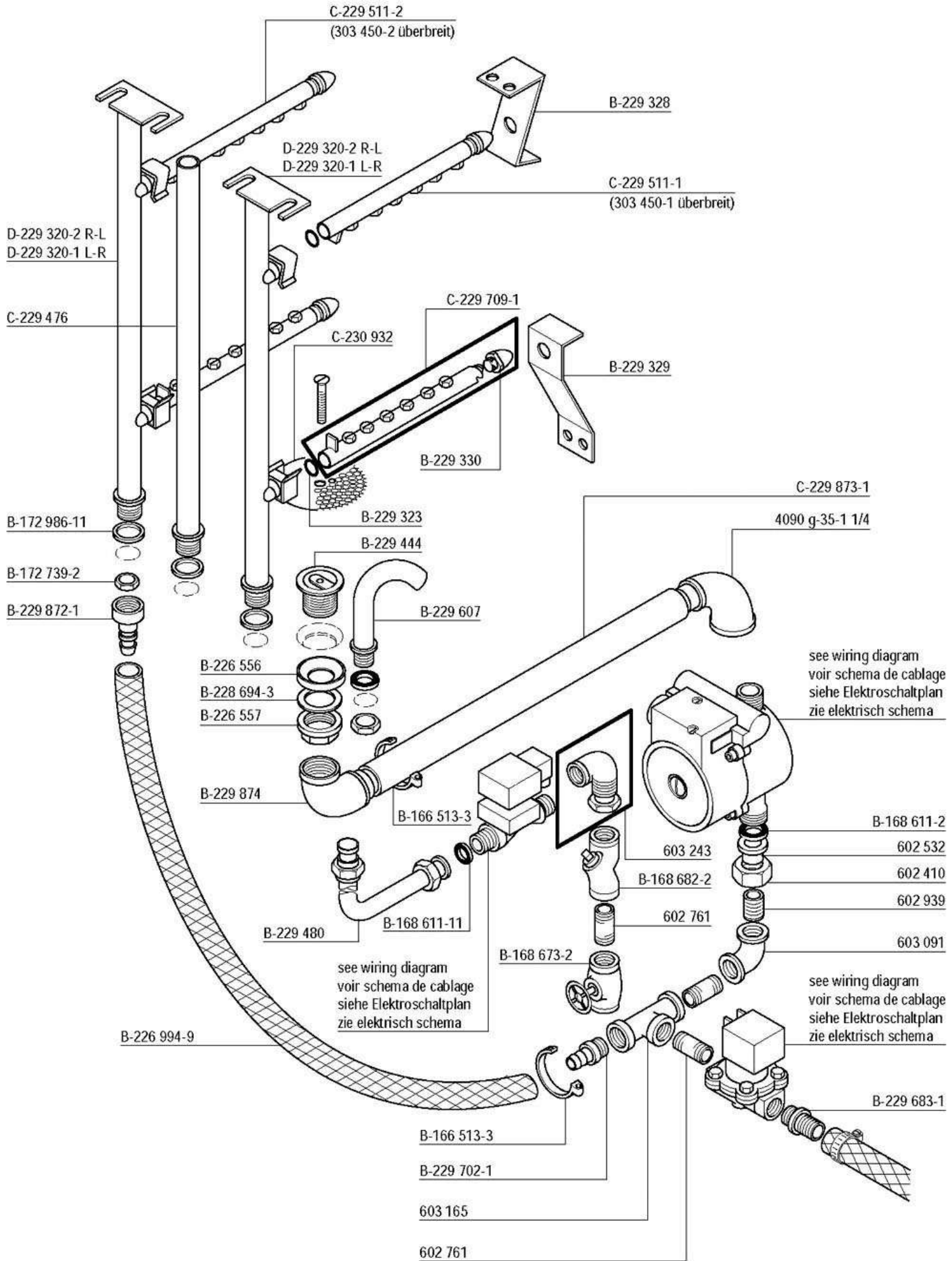
B-229 681-1

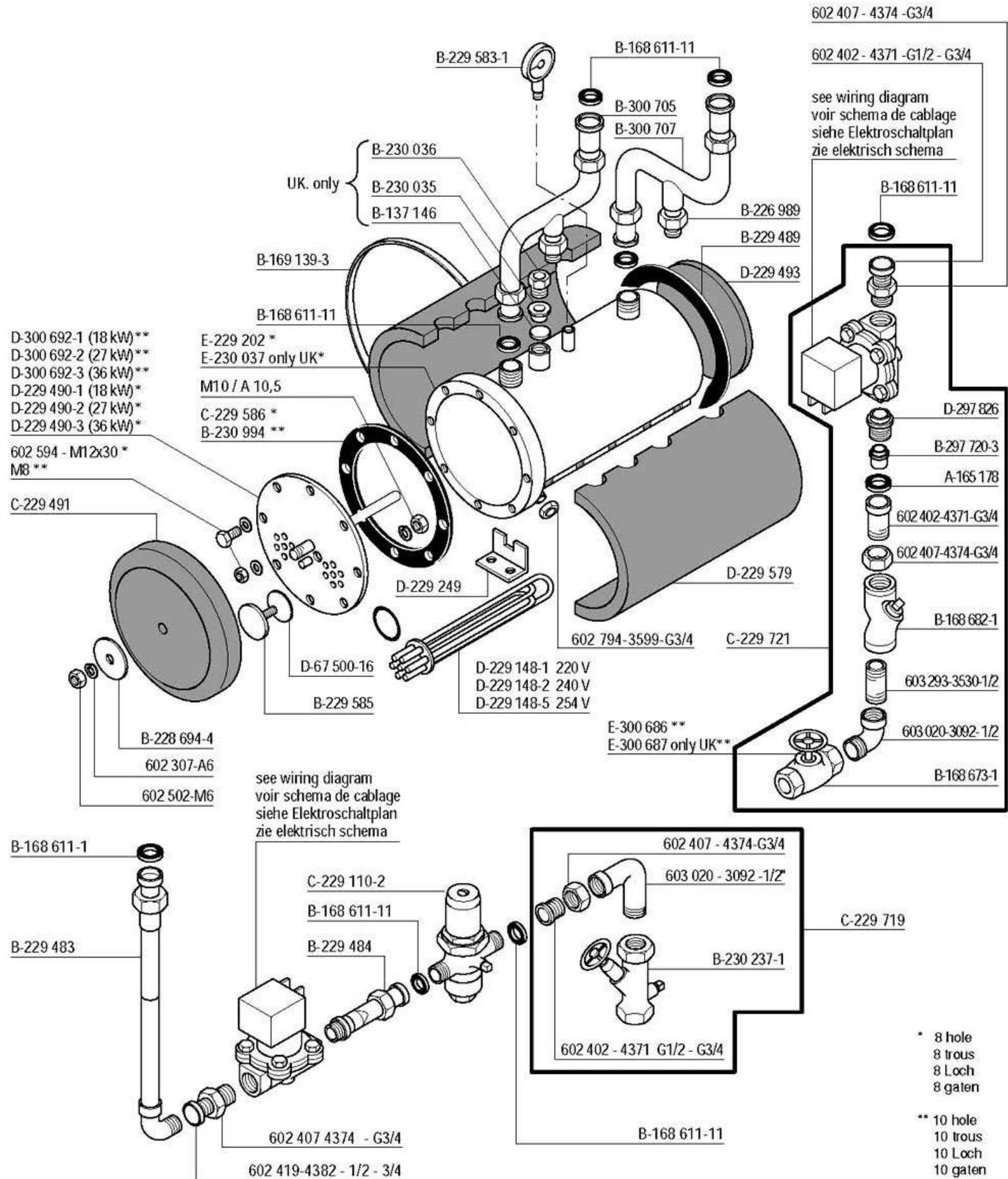


D-229 419





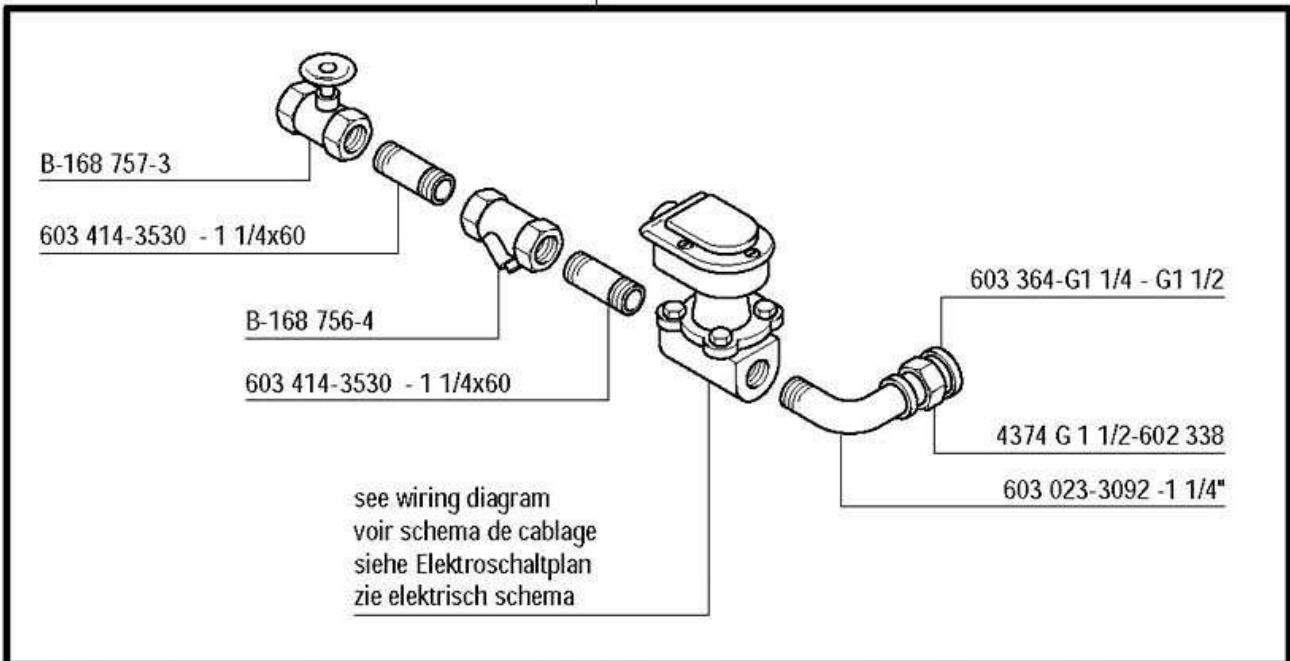
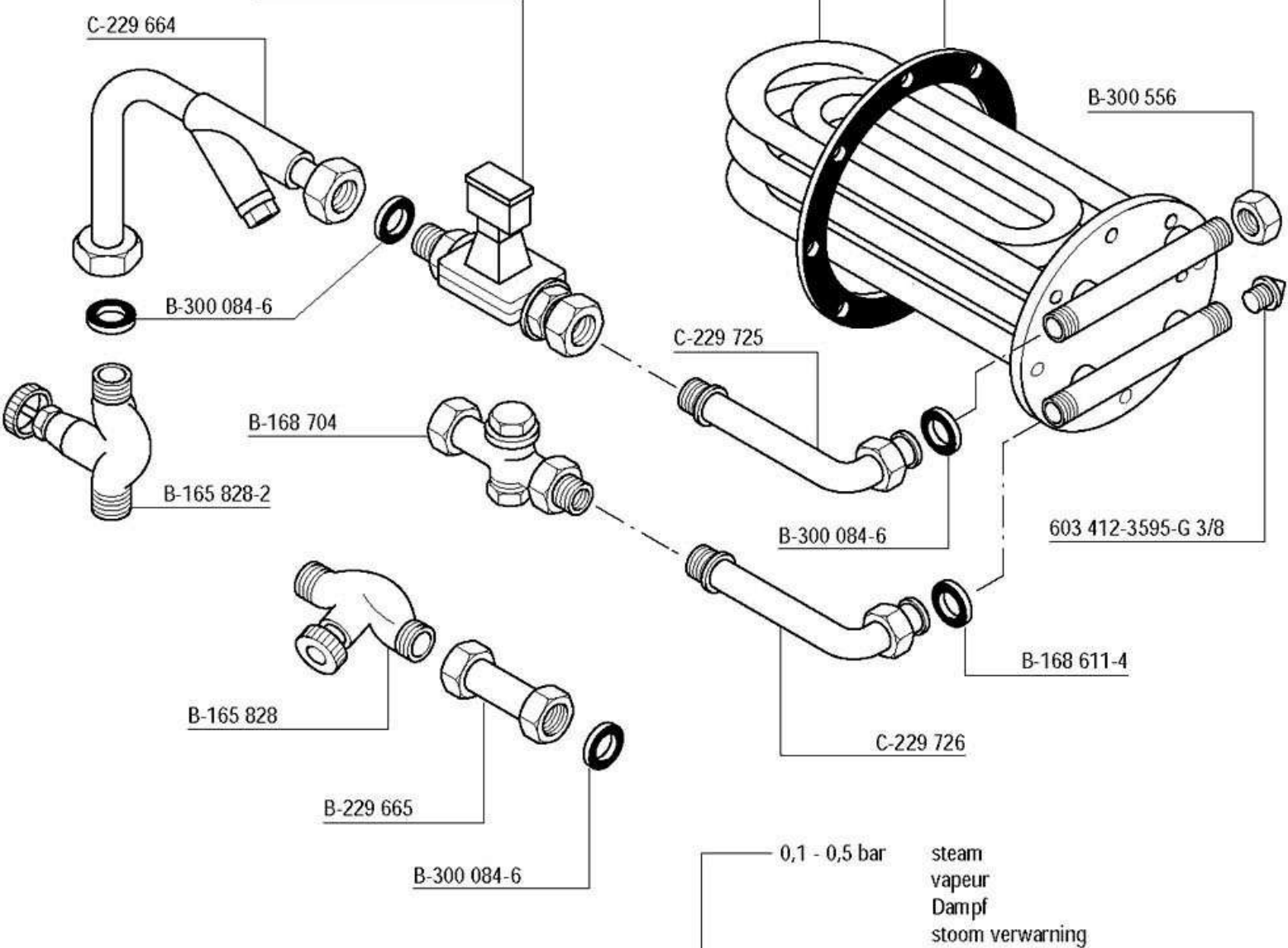




see wiring diagram  
 voir schema de cablage  
 siehe Elektroschaltplan  
 zie elektrisch schema

E-229 720 \*  
 E-300 696 \*\*

B-230 994\*\*  
 C-229 586\*

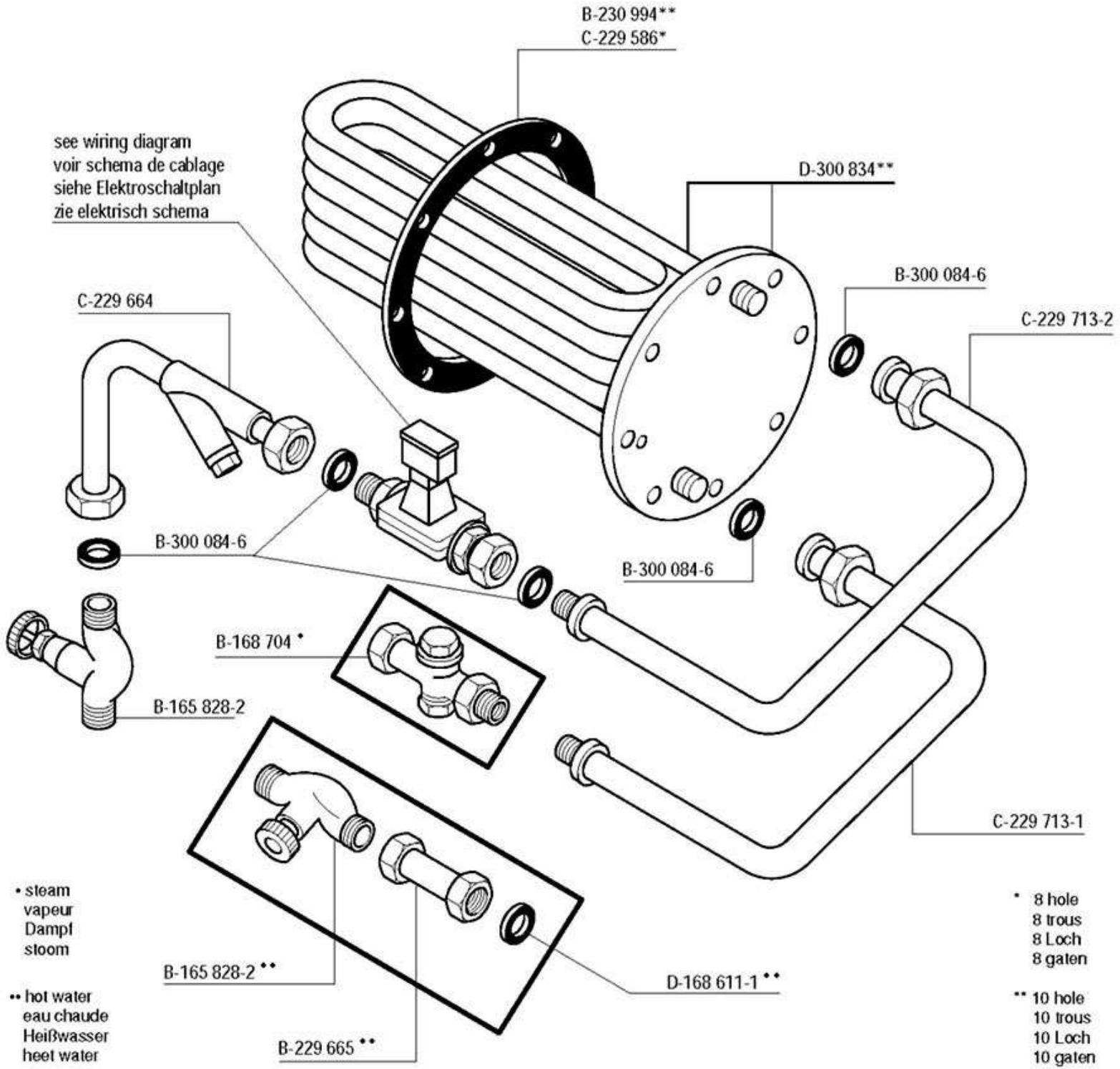


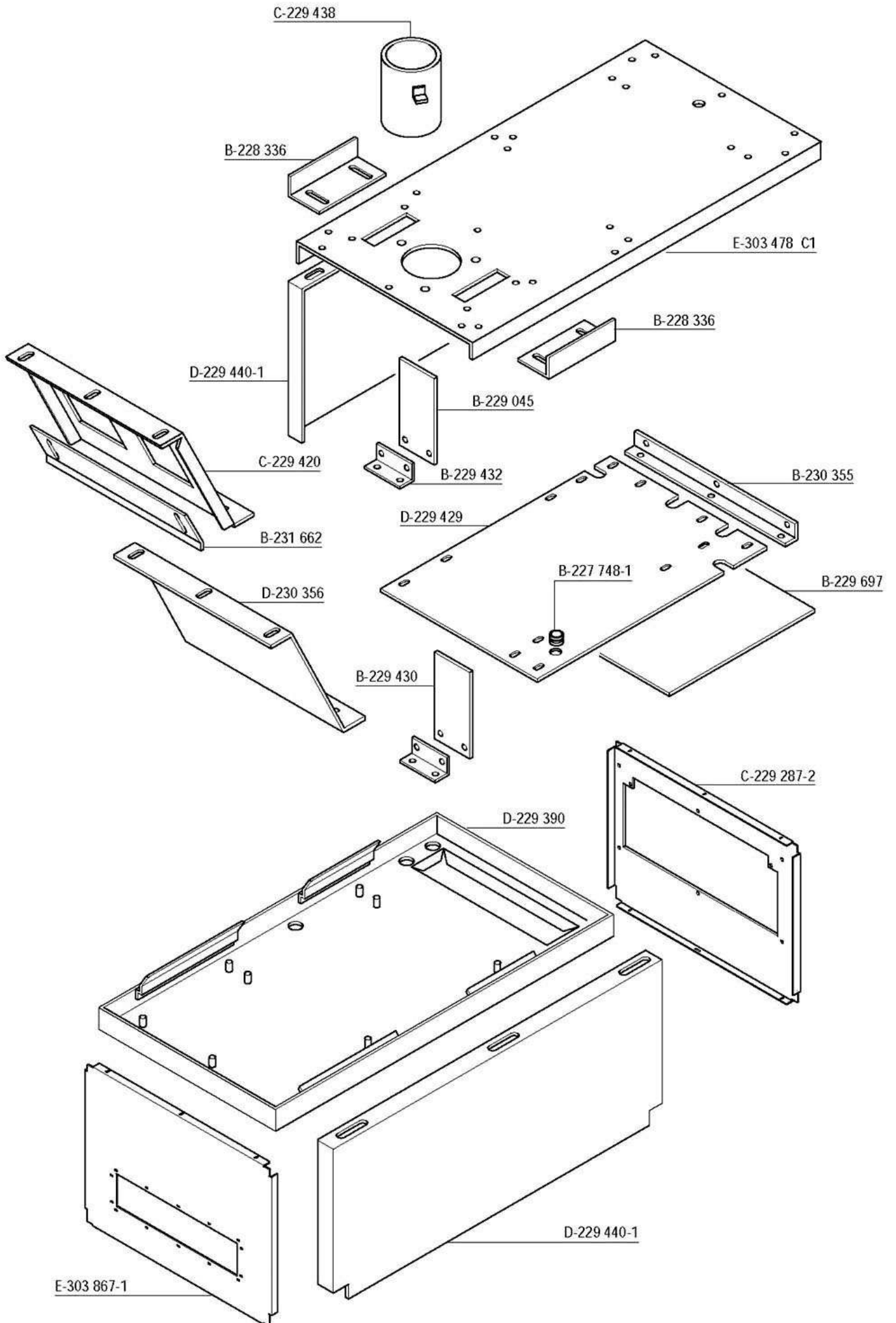


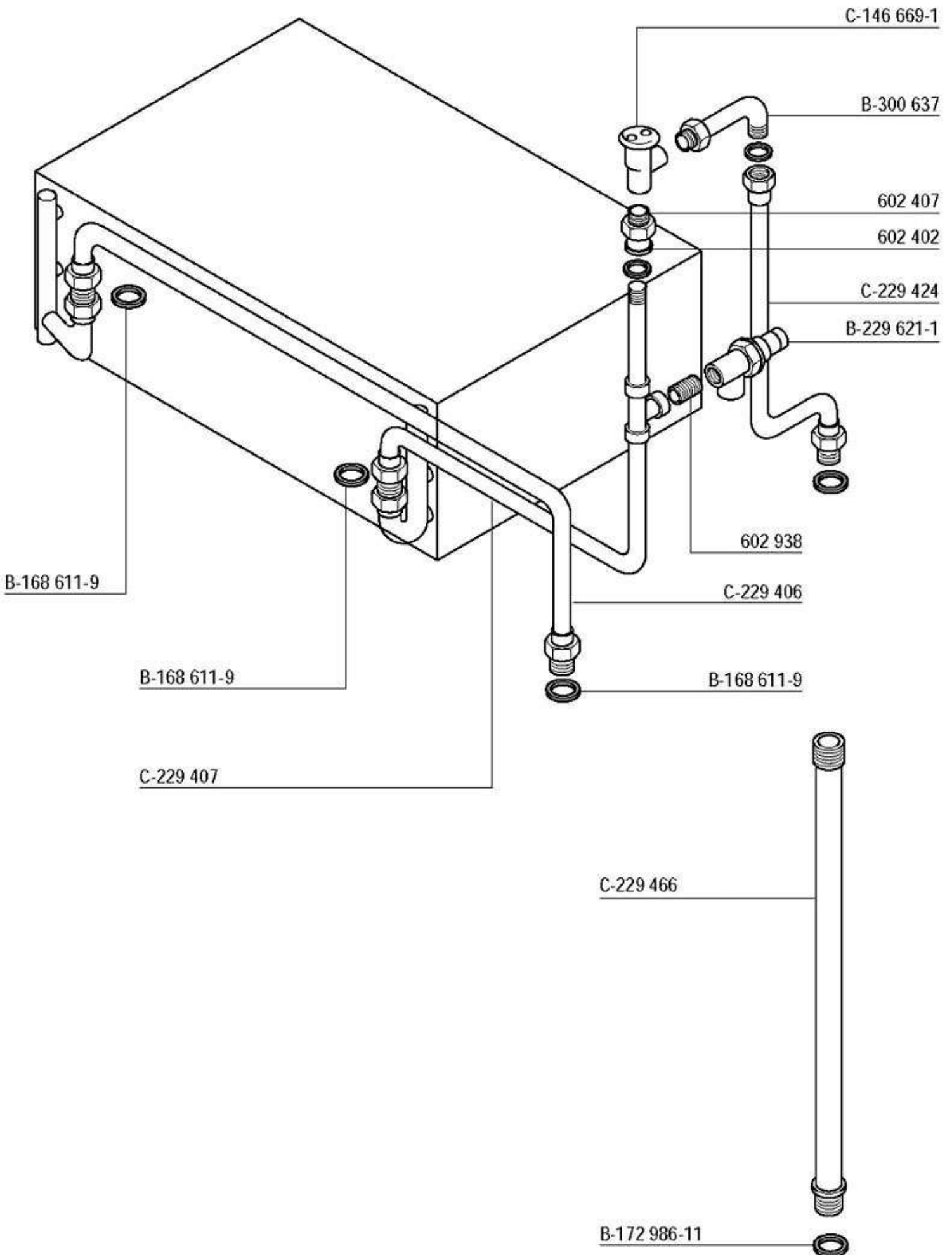


Booster 0,6m<sup>2</sup> hot water + steam  
 Chaudière 0,6m<sup>2</sup> eau chaude + vapeur  
 Durchlauferhitzer 0,6m<sup>2</sup> HW + dampfbeheizt  
 Booster 0,6m<sup>2</sup> heet water + stoom verwarming

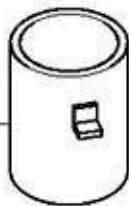
FUX



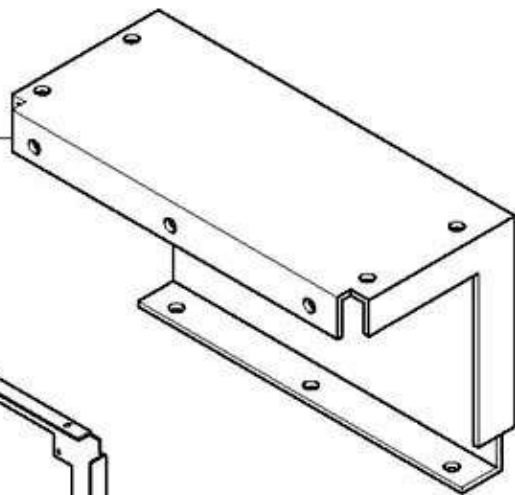




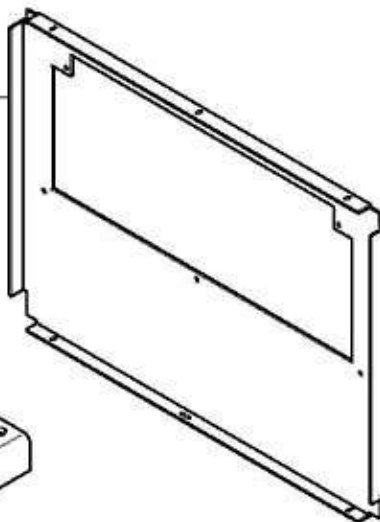
C-229 438



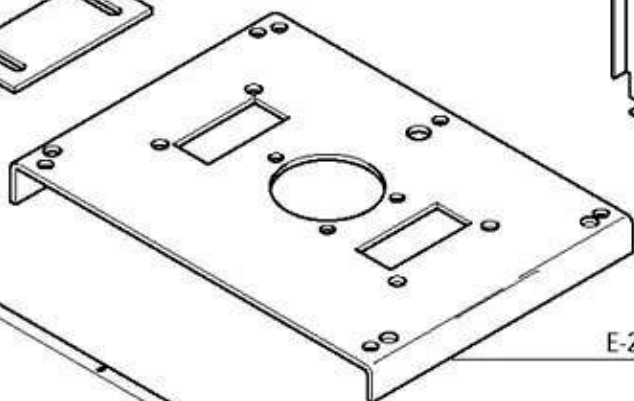
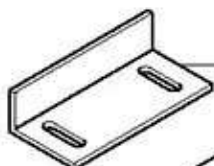
D-229 694



C-229 287-2

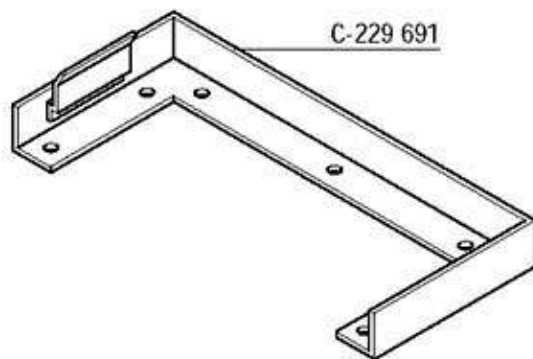


B-228 336

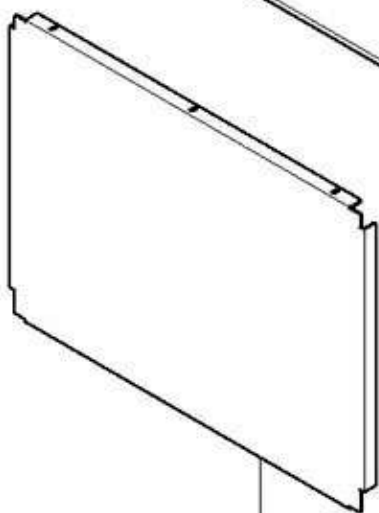


E-229 943

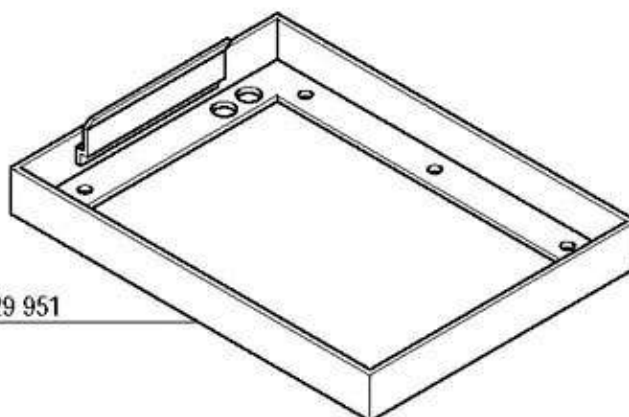
C-229 691



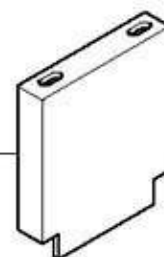
C-229 287-1



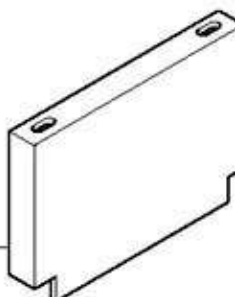
C-229 951



D-229 440-3



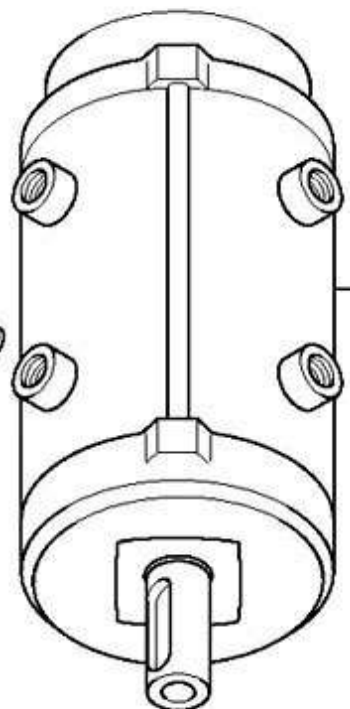
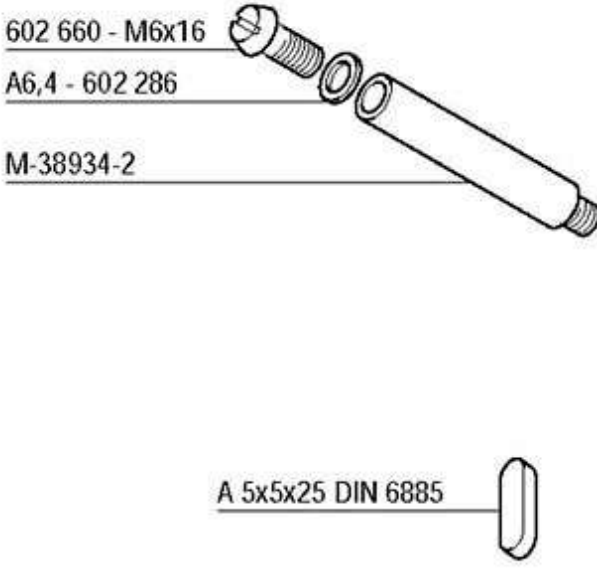
D-229 440-4



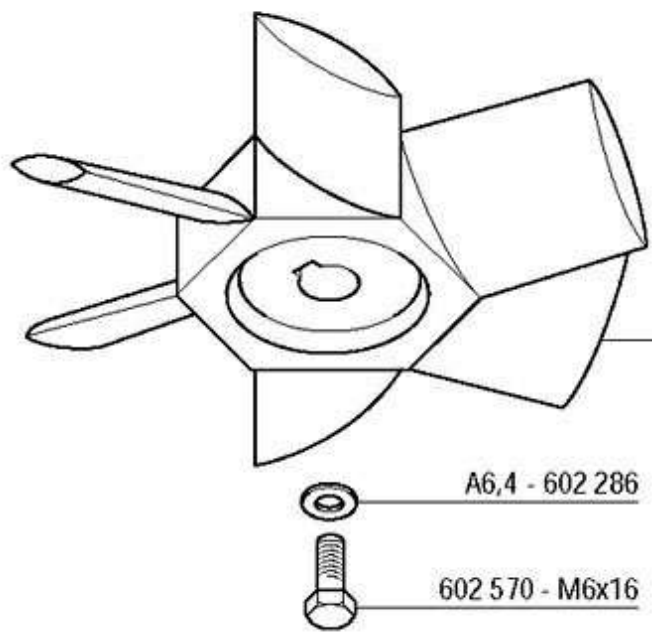


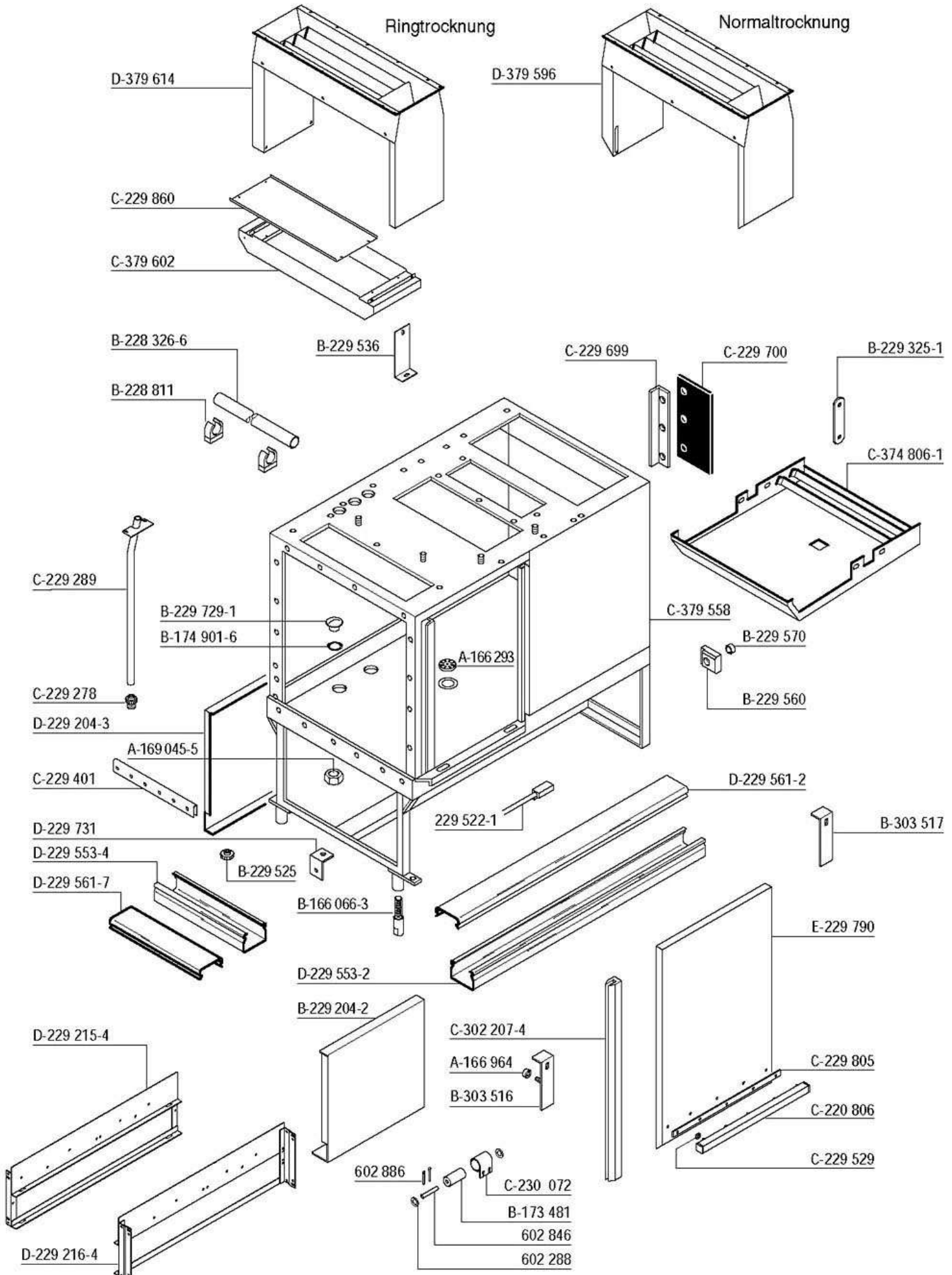
Exhaust extraction - fan  
Extraction des buées - ventilateur  
Wrasenabzug - Ventilator  
Wasemaßzuiging - ventilator

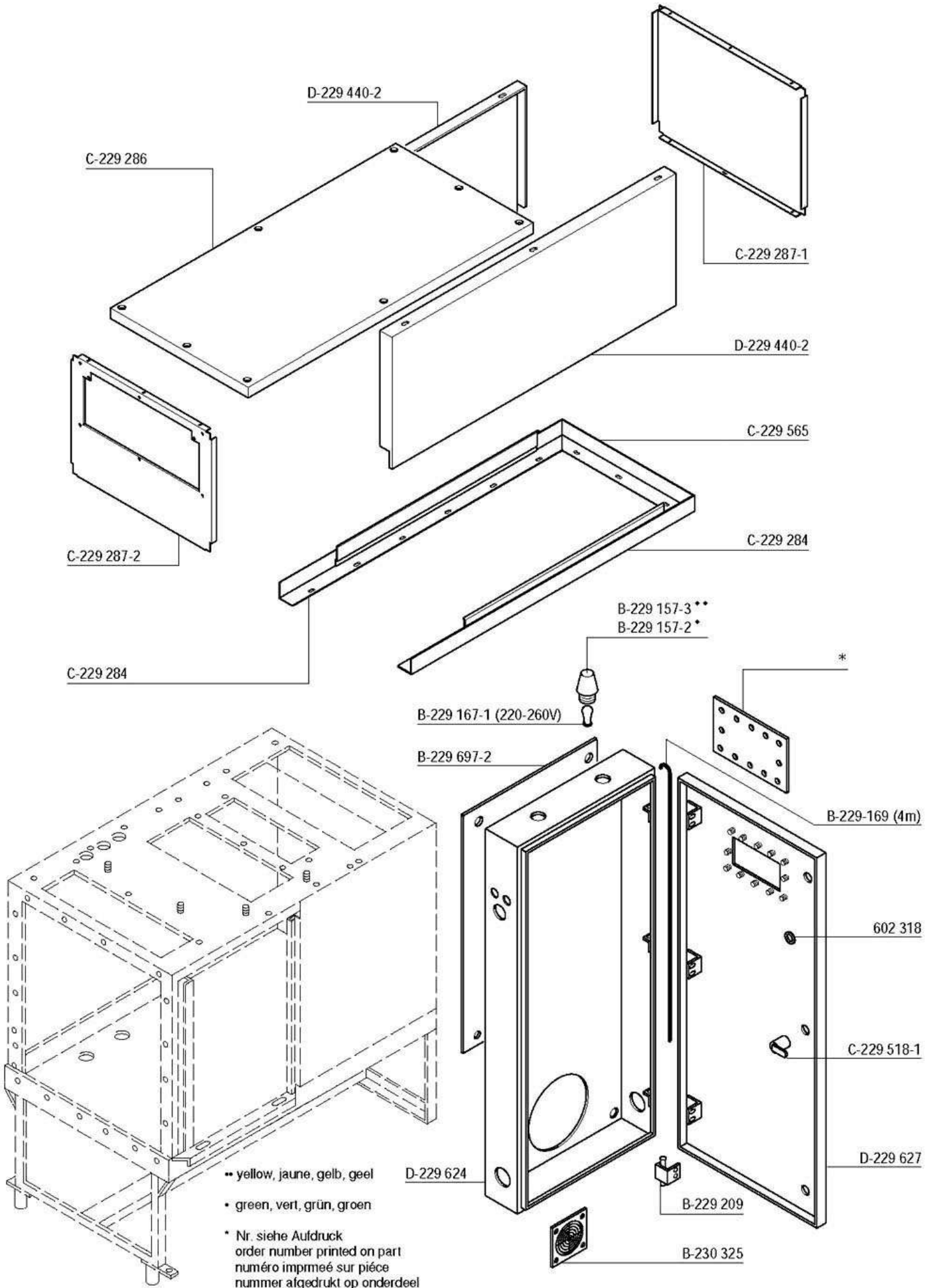
FUX



see wiring diagram  
voir schema de cablage  
siehe Elektroschaltplan  
zie elektrisch schema





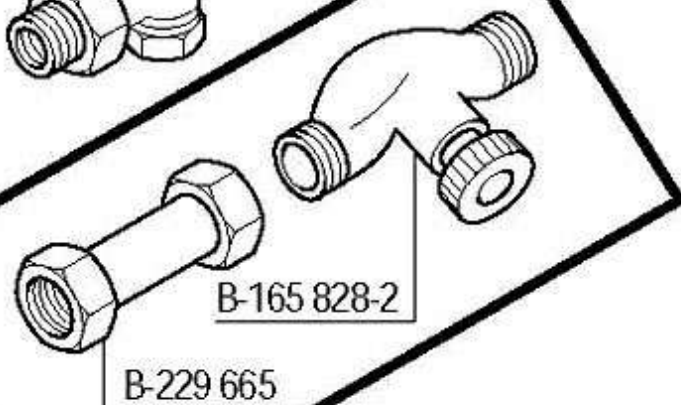
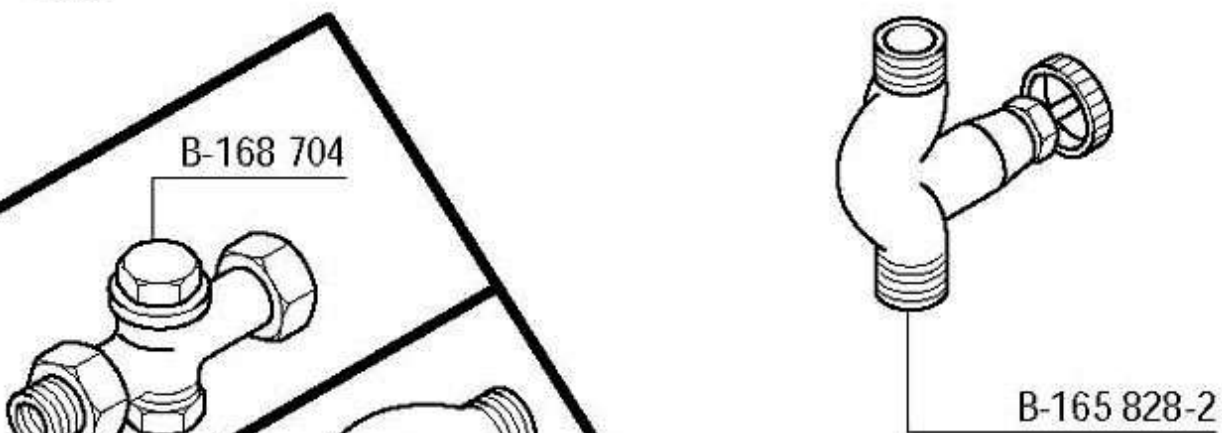
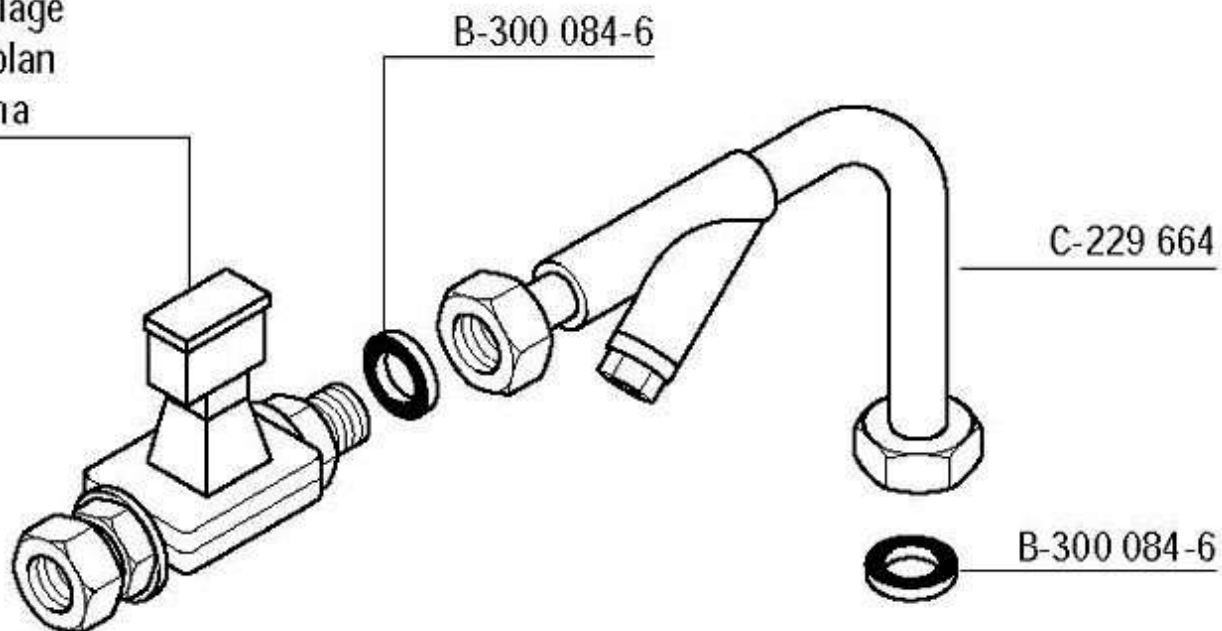




Drier D1 + D2 - pipework  
Séchage D1 + D2 - tuyauterie  
Trocknung D1 + D2 - Ventilleitung  
Droging D1 + D2 - magneetklep

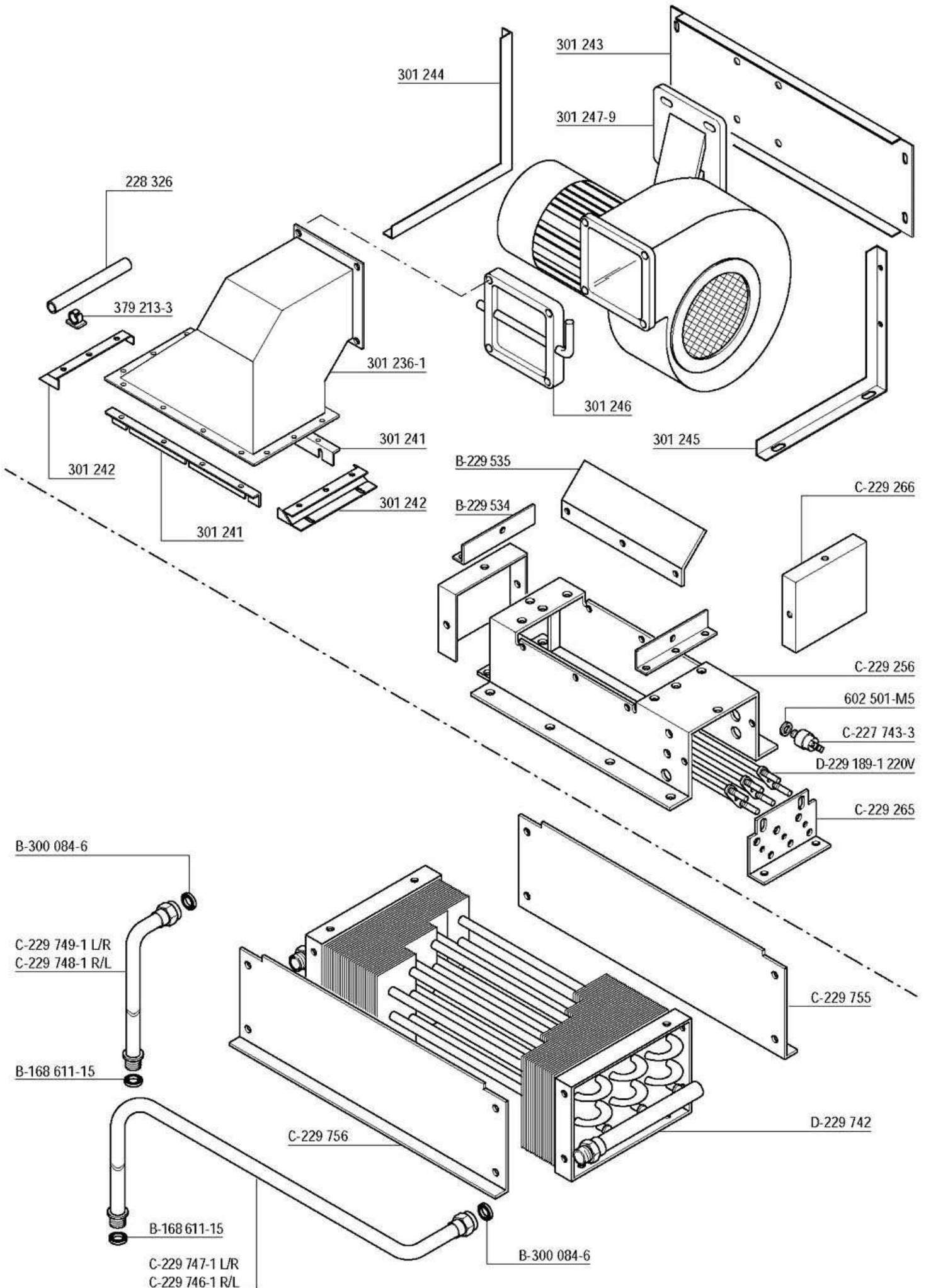
FUX

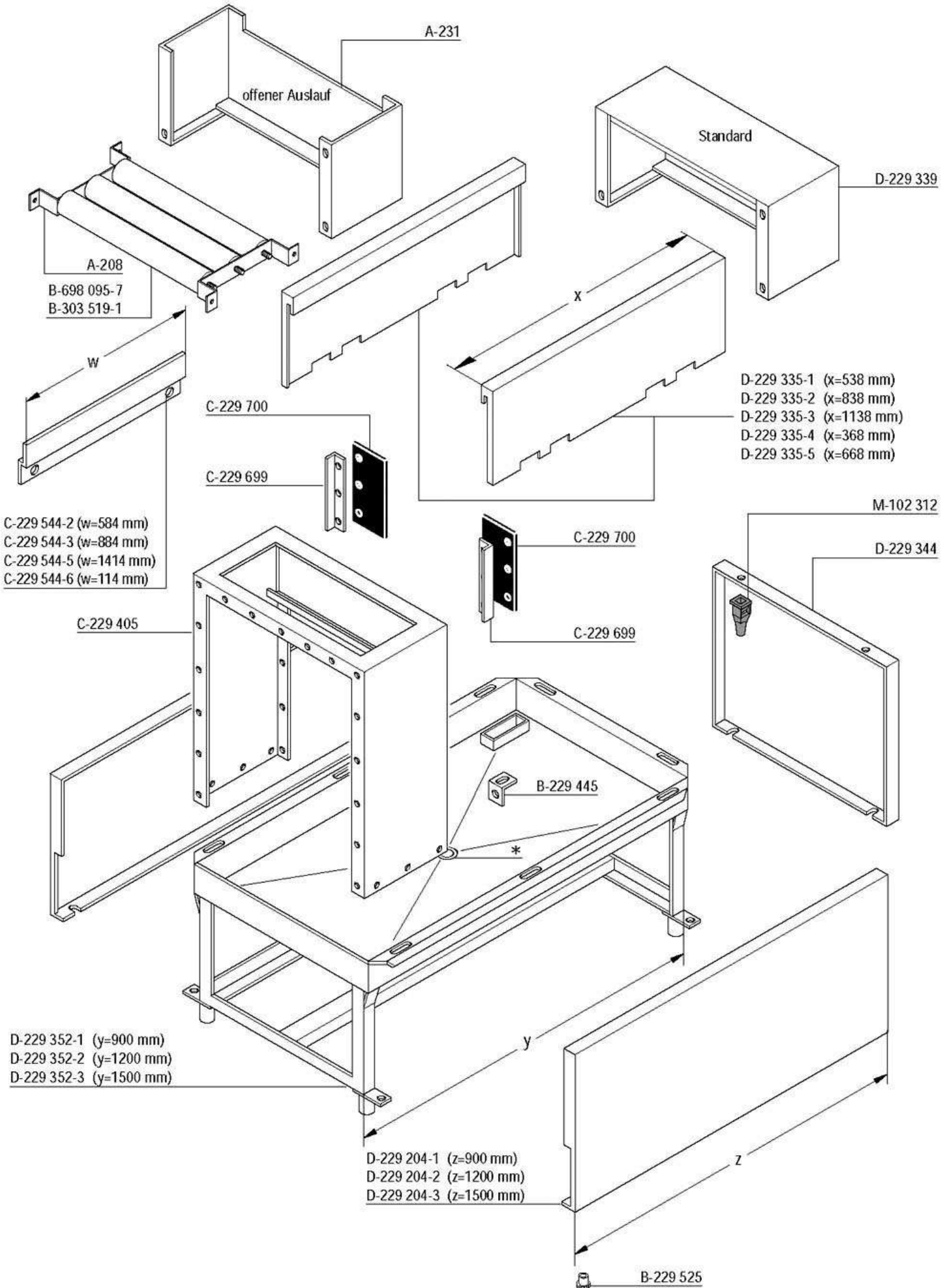
see wiring diagram  
voir schema de cablage  
siehe Elektroschaltplan  
zie elektrisch schema

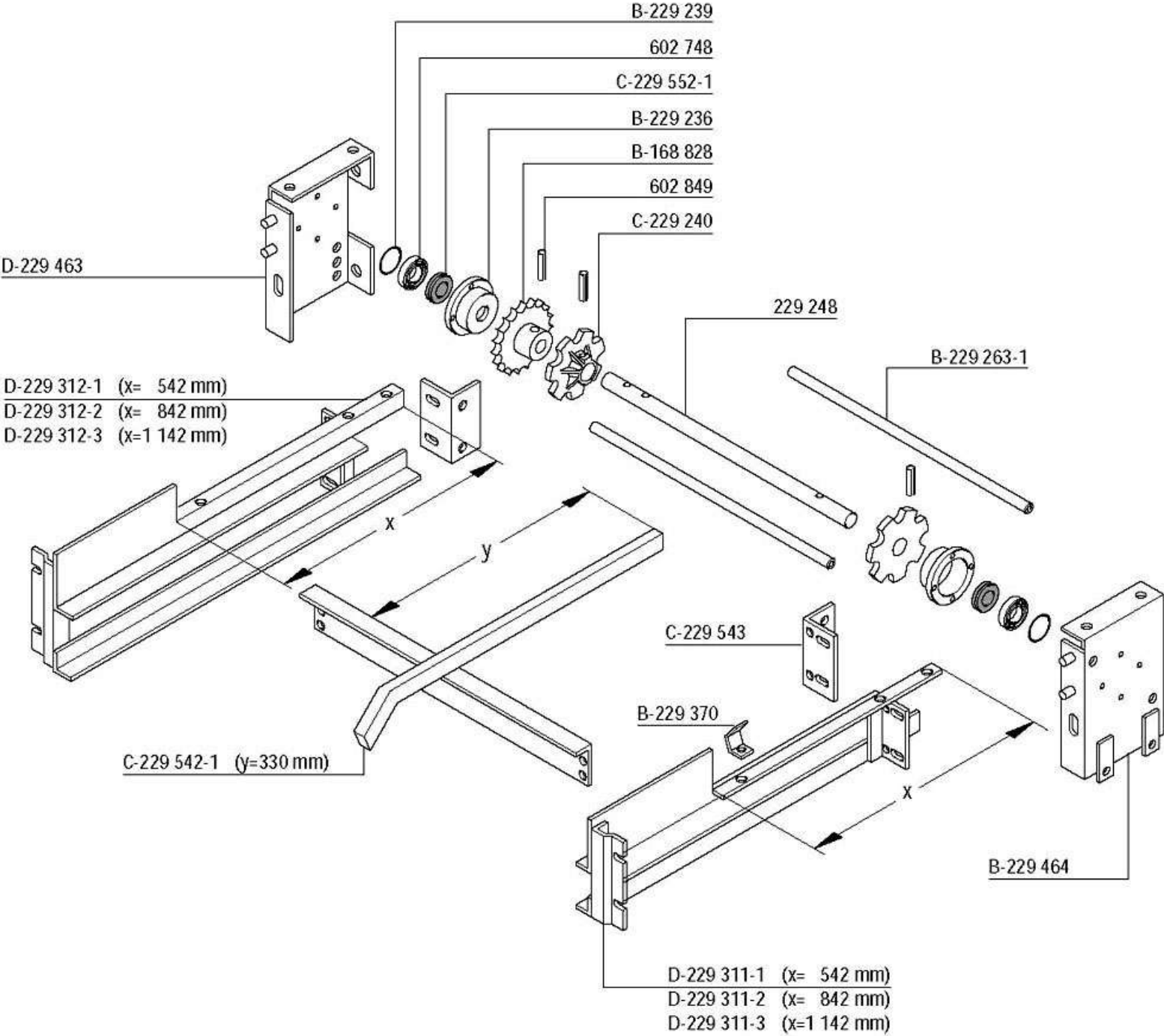


••











Exit section - conveyor drive  
Zones de déchargement - entrainement du convoyeur  
Auslaufzone - Bandantrieb  
Afvoersectie - transportbandaandrijving

FUX

